

The S4C Colloquium 2015 in Nantes
June 2, 2015

News from Cycling Research in Asia

**Public Bike Schemes:
Research and Planning
Challenges**

S.K. Jason Chang

Director, Advanced Public Transportation Research
Center

Professor, National Taiwan University

skchang@ntu.edu.tw

Agenda

- Public Bike/ Bike Sharing Schemes in Asia
- Public Bike in Taiwan
- Challenges for Research and Planning
- Concluding Remarks



Basic Data PBS in Asia

- # of Cities: 170 (140 in China)
- # Rental Stations: 15,000
- # of Bikes: 800,000
- Daily Trips: 3.6 mi



Source: The Bike-sharing World Map www.bikesharingmap.com

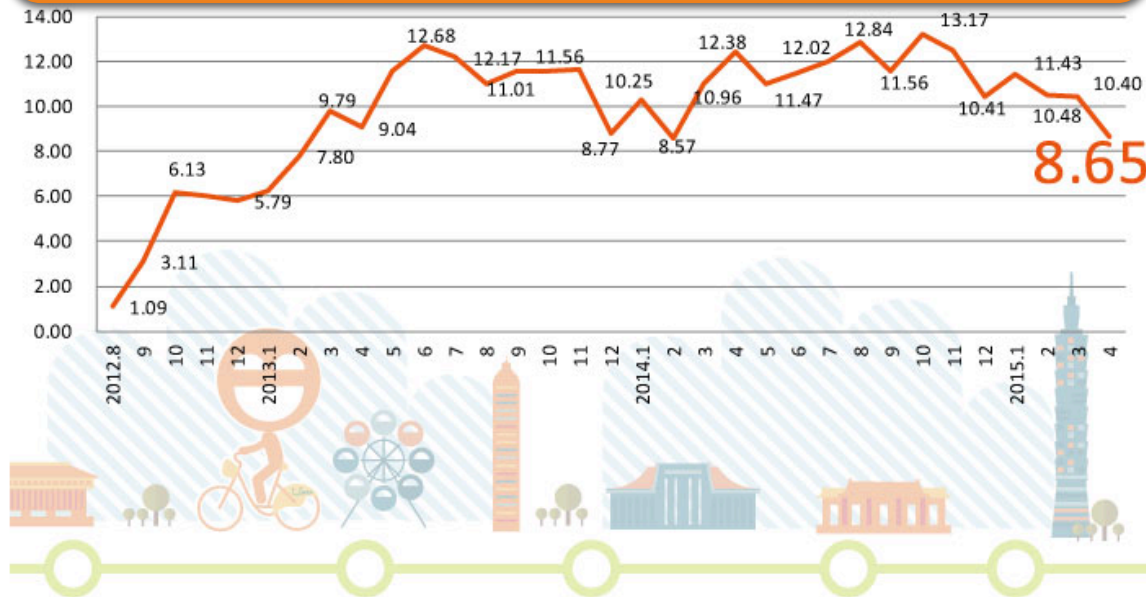
PBS in Taiwan

- # of Cities: 8 (4 in planning)
- # Rental Stations: 595 (Taipei 196)
- # of Bikes: 20,300 (Taipei 6,405)
- Daily Trips: 150,000 (Taipei 56,000)
- Turnover Rate in Taipei: 8.65/veh/day (Range: 4 ~15)
- PPP Approach and Kaohsiung Metro operates the PBS



Taipei Metropolitan

U-Bike Turnover Rate



	Taipei	NewTaipei	Taichung	Chunghua	Kaohsiung
Since	2009	2013	2014	2014	2009
Stations	196	120	45	68	162
Fleet Size	6,406	3,500	1,600	1,700	7,000
Turnover Rate (April, 2015)	8.65	7.34	6.44	6.44	4.67



Taipei Bike Lane has 382 km and Mayor Ko has announced:

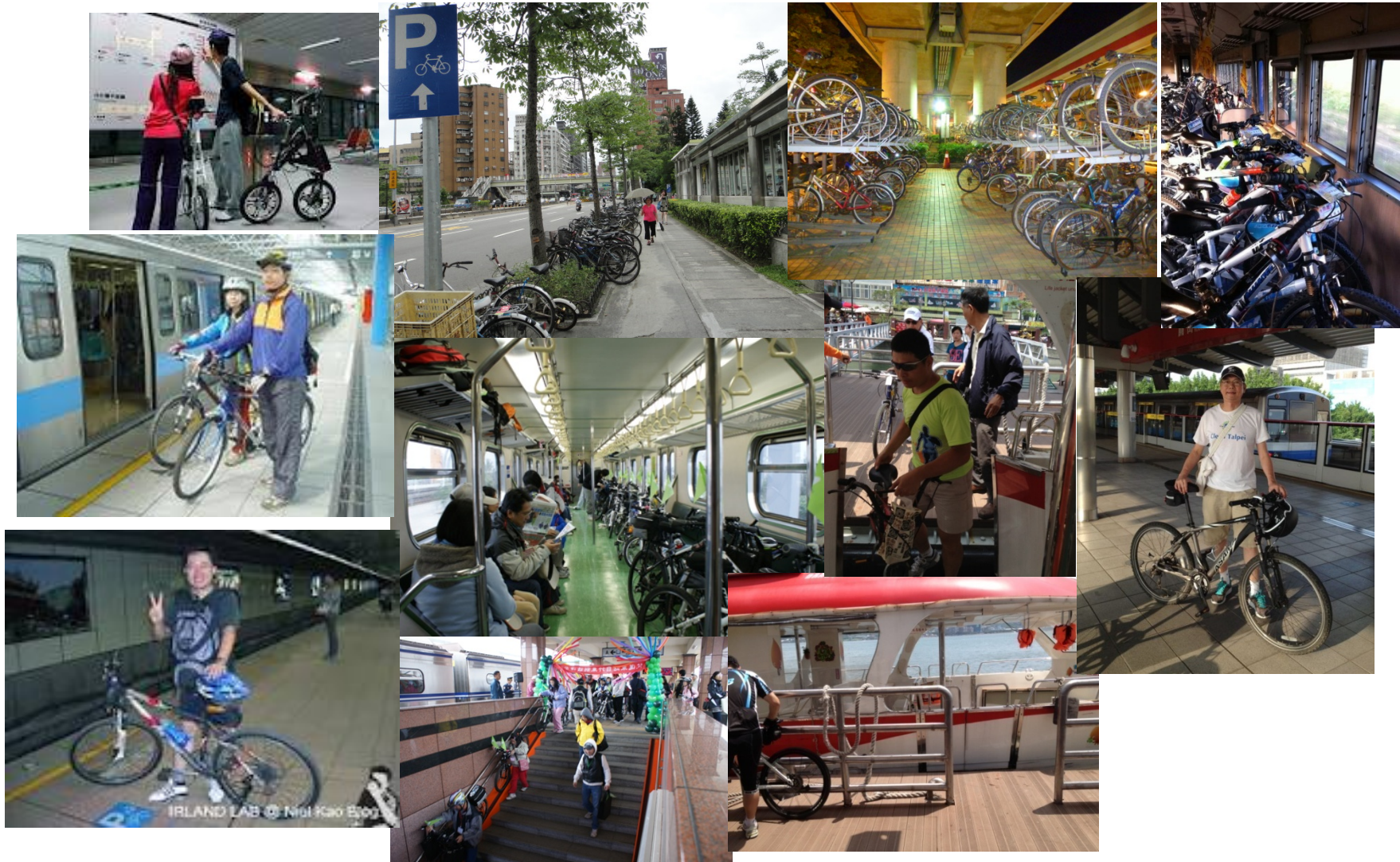
(1) Another 150km Bike Lanes and Facilities in 2 years

(2) U-Bike 2.0

Double Fleet Size

Innovative Services

Intermodal Mobility Bike + Metro, Railway, and Ferry

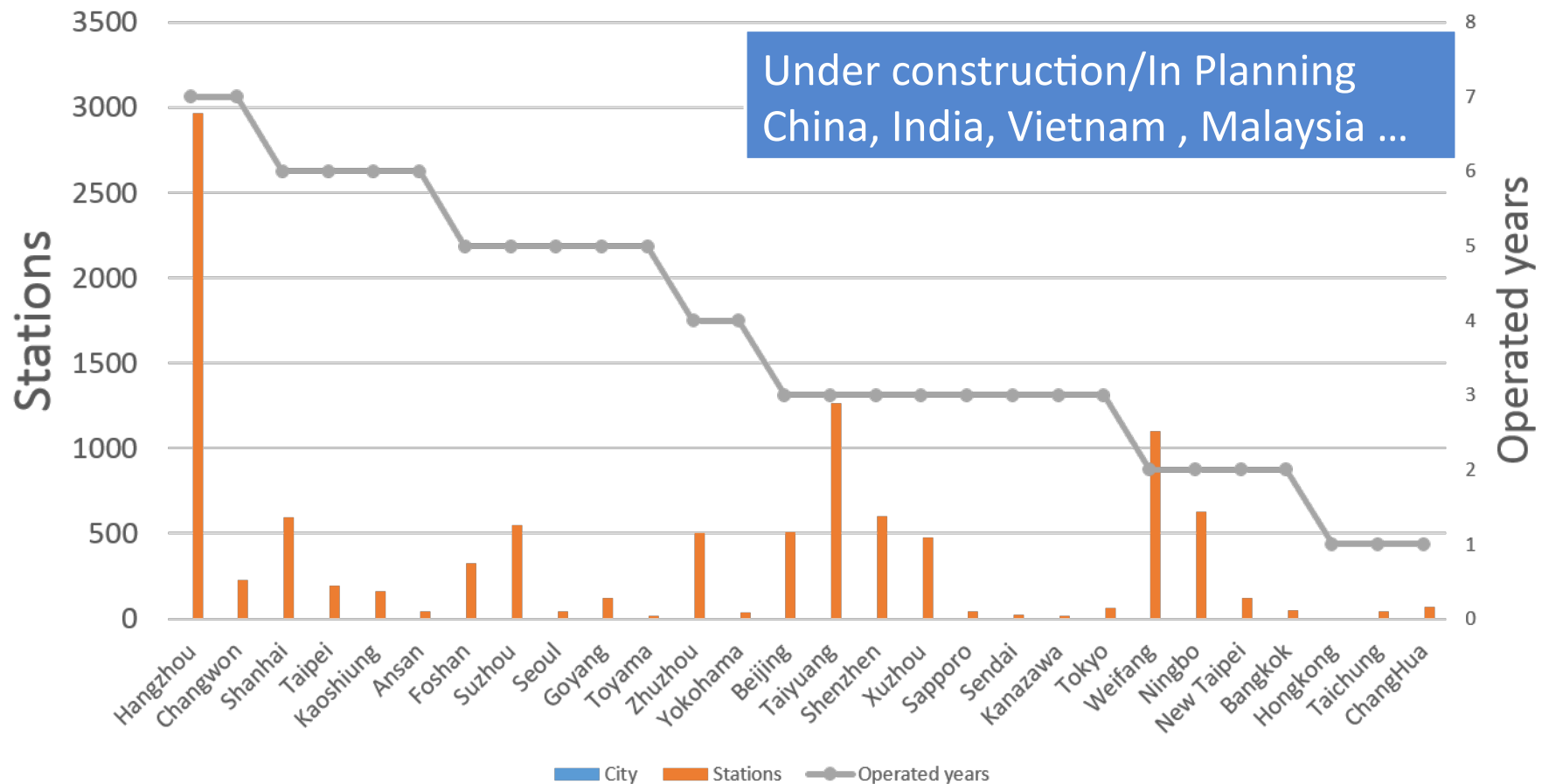


Strong Leadership and Collaborative Efforts with Industry, Academia and NGOs



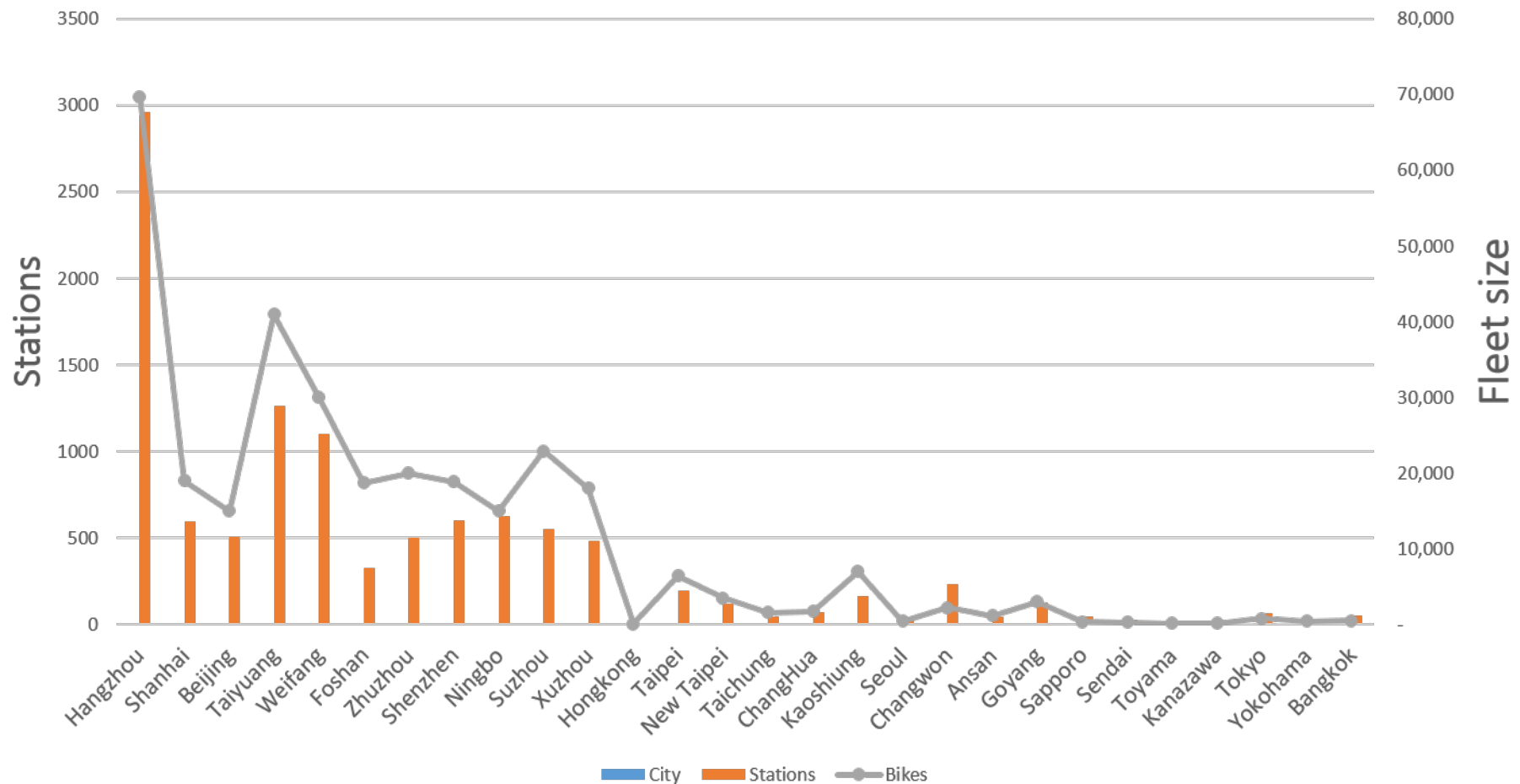
Some Observations from Asian Cities

Bike-Sharing in Asia: Station & Years



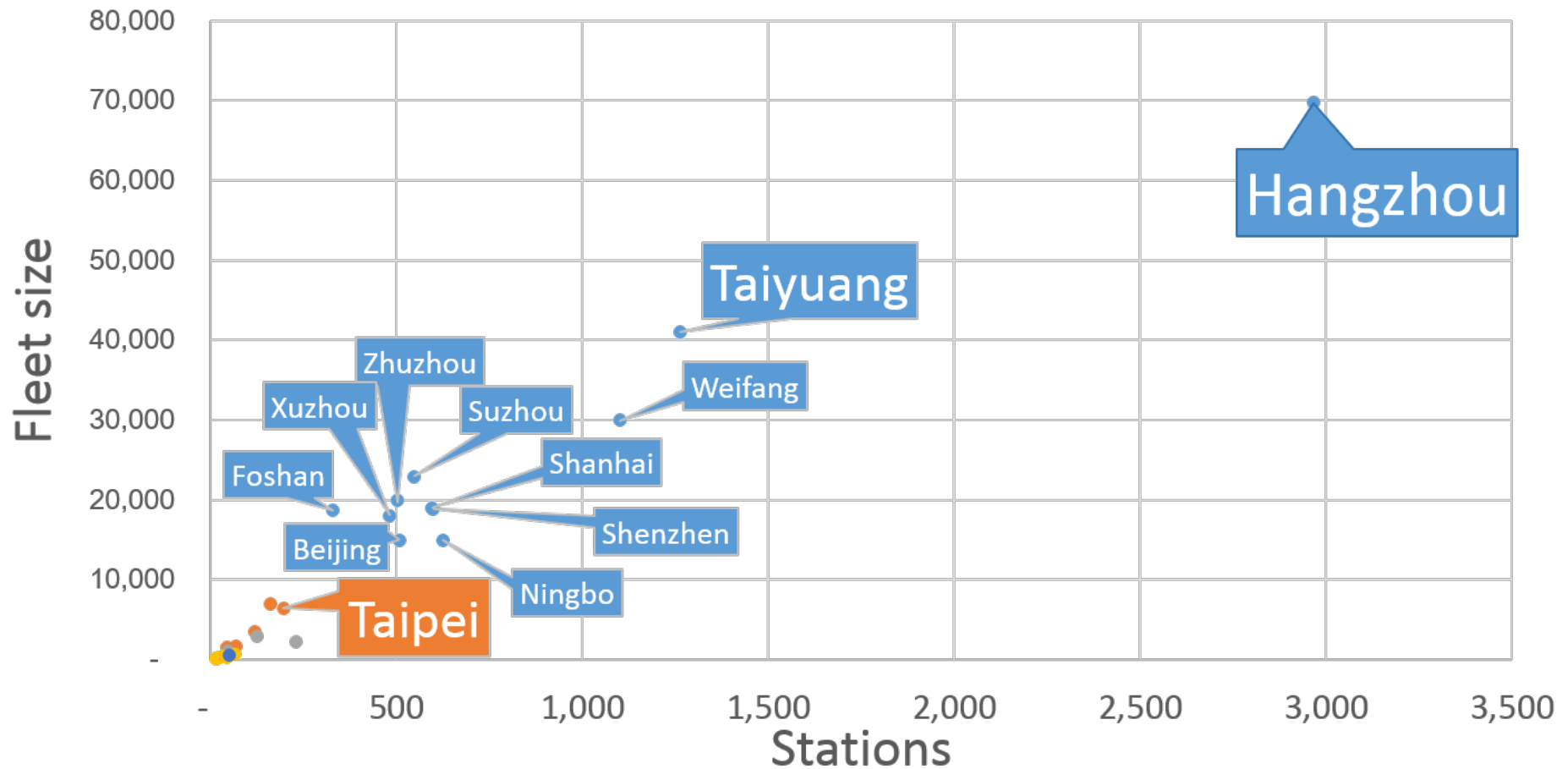
Some Observations from Asian Cities

Bike-Sharing in Asia: Station & Fleet



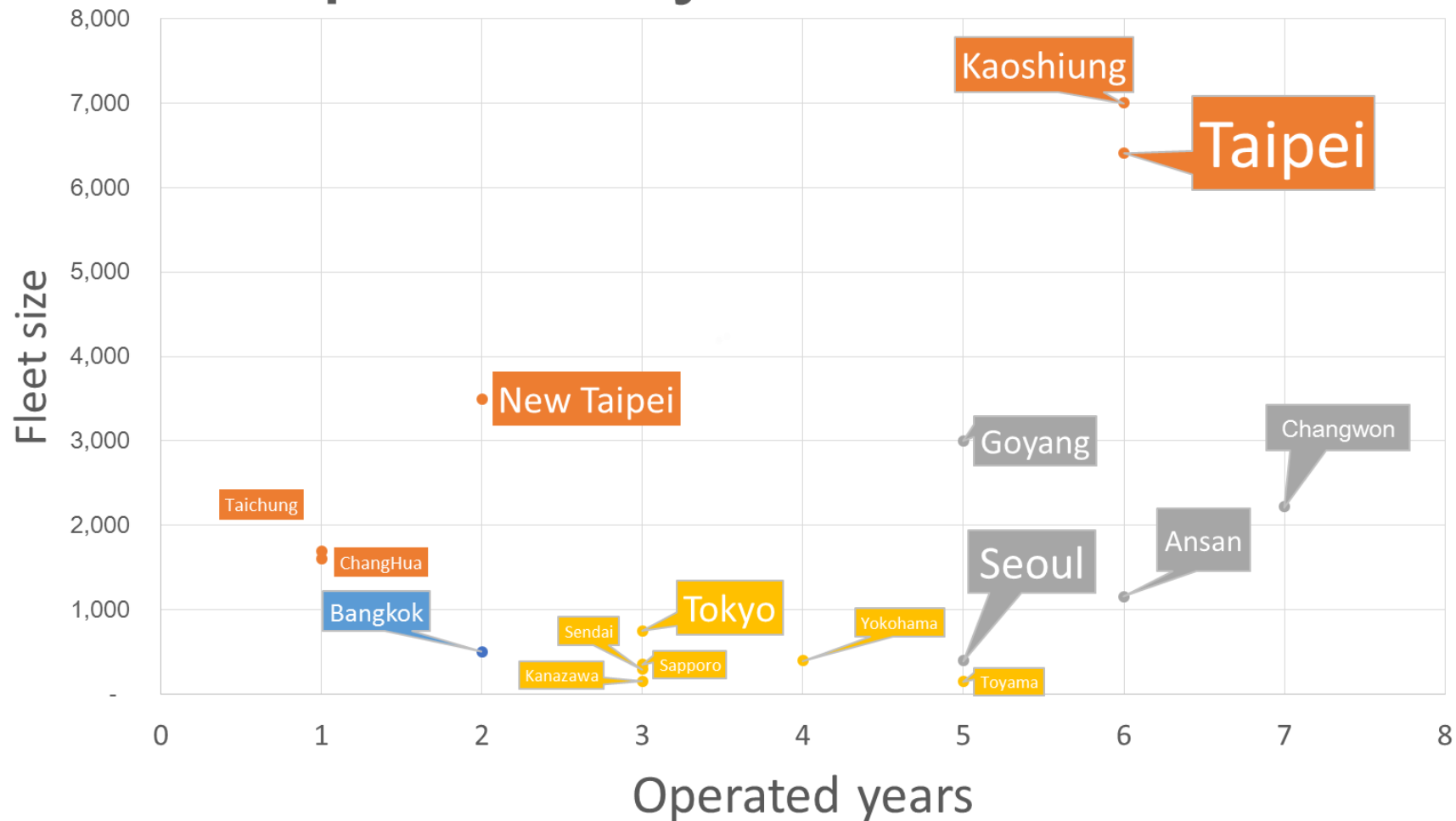
Some Observations from Asian Cities

Station v.s Fleet

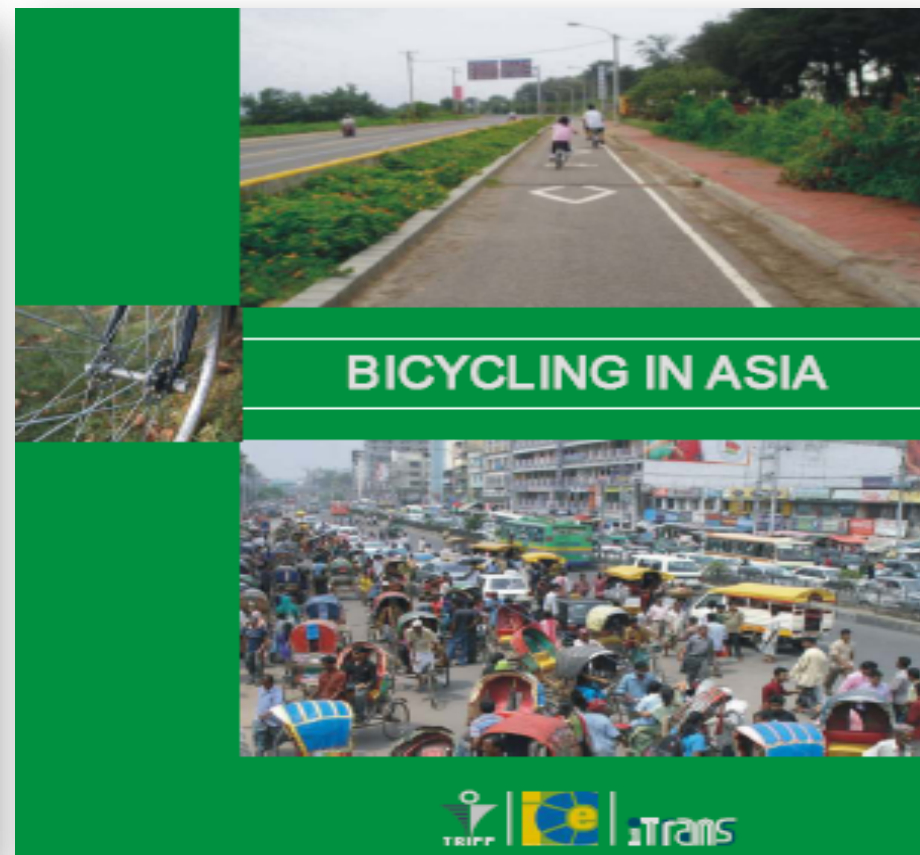


Some Observations from Asian Cities

Operated years v.s Fleet



Research and Planning Challenges of PBS and Cycling Environment in Asia



Possible Changes ?



Research and Planning Challenges on PBS and Cycling Environment in Asia

- Mixed Traffic Flow
- Traffic Safety
- Law and Regulation
- Logistics and Technology Applications
- Sustainably Financial Scheme
- Street and Facility Design for Active Mobility
- e-Bike vs. e-Motorcycle
- Sports/ Leisure Purposes vs. Cycling to Work
- Value and Behavior



Welcome you to Taipei and Asia



全球自行車城市大會
VELO-CITY GLOBAL 2016
EVOLUTION OF CYCLING
TAIPEI FEB.27 - MAR.1
www.velo-city2016.com



Top 10 Classic Cycling Routes



10大經典自行車路線

top10cycling.tw
遴選啟動記者會

台灣真美
幸福有感



主辦機關：教育部體育署
協辦機關：交通部觀光局、交通部運輸研究所、內政部營建署
協辦單位：中華民國道路協會、中華民國運輸協會
承辦單位：國立臺灣大學、中華大學、台灣樂活自行車協會

贊助單位：



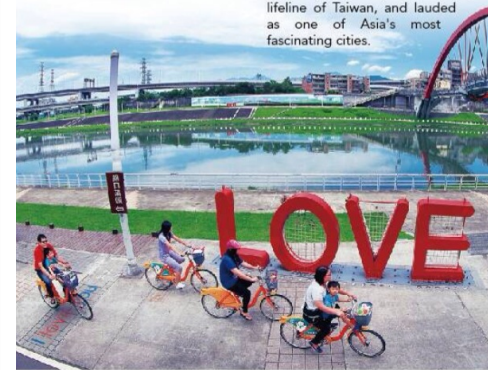
Conference Theme - Evolution of Cycling



Taipei-

On Par With the World's Best

Located at the center of the Asia-Pacific region, Taipei is the political, financial, and cultural lifeline of Taiwan, and lauded as one of Asia's most fascinating cities.







Thanks

Welcome all of you to
Taipei Taiwan for the
Velo-City Global 2016
Feb 26~ March 1, 2016